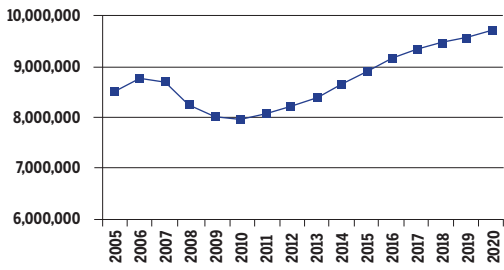


**FLORIDA**  
2010-2020 Total Job Openings 3,233,000

**FL TOTAL JOBS, excluding military**



OCCUPATION	2010 jobs	2020 jobs	Growth rate (%)
Managerial and Professional Office	1,058,220	1,352,930	28
STEM	277,910	340,840	23
Social Sciences	32,410	42,220	30
Community Services and Arts	317,870	389,690	23
Education	376,010	459,700	22
Healthcare Professional and Technical	380,280	477,670	26
Healthcare Support	210,480	275,650	31
Food and Personal Services	1,520,080	1,901,720	25
Sales and Office Support	2,440,970	2,919,500	20
Blue Collar	1,349,650	1,554,230	15
<b>TOTAL</b>	<b>7,963,870</b>	<b>9,714,140</b>	<b>22</b>

INDUSTRY	2010 jobs	2020 jobs	Growth rate (%)
Agriculture, Forestry, Fishing and Hunting	119,800	122,280	2
Mining, Quarrying, and Oil and Gas Extraction	16,780	26,730	59
Utilities	20,200	21,990	9
Construction	419,130	480,200	15
Manufacturing	280,730	316,710	13
Wholesale Trade	284,630	347,520	22
Retail Trade	890,440	1,033,600	16
Transportation and Warehousing	271,530	322,310	19
Information	137,680	151,930	10
Finance and Insurance	497,780	652,690	31
Real Estate and Rental and Leasing	435,410	558,480	28
Professional, Scientific, and Technical Services	550,190	717,610	30
Management of Companies and Enterprises	76,780	98,740	29
Administrative and Support and Waste Management and Remediation Services	648,860	849,530	31
Educational Services	164,980	211,820	28
Healthcare and Social Assistance	903,530	1,152,710	28
Arts, Entertainment, and Recreation	233,410	281,940	21
Accommodation and Food Services	643,760	778,130	21
Other Services (except Public Administration)	482,750	582,840	21
Government	885,500	1,006,390	14
<b>TOTAL</b>	<b>7,963,840</b>	<b>9,714,140</b>	<b>22</b>

**JOB OPENINGS BY OCCUPATION AND EDUCATION LEVEL (IN THOUSANDS)**

OCCUPATION	Less than high school	High school diploma	Some college/ no degree	Associate's degree	Bachelor's degree	Master's degree or better
Managerial and Professional Office	7	57	85	51	159	89
STEM	1	10	18	13	48	23
Social Sciences	0	0	0	1	5	8
Community Services and Arts	2	14	21	13	57	23
Education	1	10	13	8	68	52
Healthcare Professional and Technical	1	12	25	38	41	43
Healthcare Support	8	31	29	15	5	2
Food and Personal Services	118	228	153	58	63	13
Sales and Office Support	53	290	280	117	193	39
Blue Collar	99	235	101	38	37	7
<b>TOTAL</b>	<b>290</b>	<b>887</b>	<b>726</b>	<b>352</b>	<b>678</b>	<b>300</b>

**RECOVERY:**



## 2020 TOTAL JOBS BY OCCUPATION AND EDUCATION LEVEL

OCCUPATION	Less than high school	High school diploma	Some college/ no degree	Associate's degree	Bachelor's degree	Master's degree or better
<b>Managerial and Professional Office:</b>						
Management	16,420	97,930	130,740	65,160	199,710	104,930
Business operations	3,880	42,260	60,510	39,970	107,050	37,360
Financial services	610	25,540	51,660	40,310	160,890	70,130
Legal	1,290	6,840	13,960	9,040	10,350	56,400
<b>STEM :</b>						
Computers & mathematical sciences	480	12,790	35,190	26,140	83,470	32,860
Architecture	1,440	3,790	4,420	3,030	7,770	2,370
Engineering	500	8,160	10,780	8,430	43,600	20,510
Life & physical sciences	640	3,320	3,900	2,680	11,630	13,630
<b>Social Sciences</b>	-	-	-	1,840	15,420	24,300
<b>Community Services and Arts:</b>						
Community & social services	940	11,140	13,850	6,190	44,320	38,410
Arts, design, entertainment, sports & media	6,330	29,580	49,110	31,620	128,050	30,130
<b>Education, Training &amp; Library</b>	4,150	29,050	39,300	24,550	205,480	157,170
<b>Healthcare Professional &amp; Technical</b>	1,820	37,090	75,260	114,350	122,620	128,310
<b>Healthcare Support</b>	22,820	94,230	88,120	45,310	16,320	7,040
<b>Food and Personal Services:</b>						
Food preparation & serving related	144,750	261,230	171,240	67,060	58,360	9,580
Building and grounds cleaning & maintenance	153,980	225,500	82,200	27,950	26,160	7,730
Personal care & services	49,660	148,200	117,150	43,090	63,700	12,760
Protective services	5,710	50,590	89,070	36,610	41,430	8,010
<b>Sales and Office Support:</b>						
Sales & related	87,650	394,090	345,390	142,620	357,240	73,020
Office & administrative support	69,900	471,840	493,980	206,660	214,740	42,890
<b>Blue Collar:</b>						
Farming, fishing & forestry	35,550	19,190	2,050	1,160	3,440	1,130
Construction & extraction	94,140	176,720	65,260	21,350	25,220	4,630
Installation, maintenance & repair	44,430	150,610	89,450	39,370	26,700	2,900
Production	50,810	136,970	68,710	17,860	18,310	5,080
Transportation & material moving	71,050	222,430	77,780	34,990	38,280	8,660

