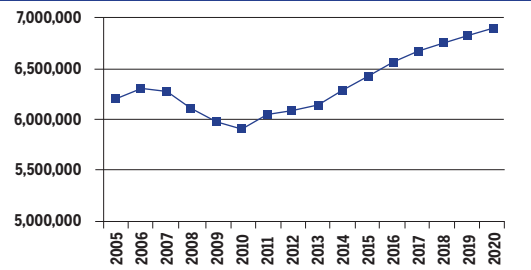


ILLINOIS

2010-2020 Total Job Openings 2,296,000

IL TOTAL JOBS, excluding military



OCCUPATION	2010 jobs	2020 jobs	Growth rate (%)
Managerial and Professional Office	904,100	1,072,870	19
STEM	229,720	266,480	16
Social Sciences	27,820	34,620	24
Community Services and Arts	246,710	290,400	18
Education	373,870	450,420	20
Healthcare Professional and Technical	278,470	341,050	22
Healthcare Support	139,590	183,700	32
Food and Personal Services	939,740	1,132,320	20
Sales and Office Support	1,538,140	1,743,640	13
Blue Collar	1,231,590	1,383,860	12
TOTAL	5,909,750	6,899,360	17

INDUSTRY	2010 jobs	2020 jobs	Growth rate (%)
Agriculture, Forestry, Fishing and Hunting	75,220	71,860	-4
Mining, Quarrying, and Oil and Gas Extraction	19,340	25,900	34
Utilities	19,880	19,470	-2
Construction	263,670	302,140	15
Manufacturing	479,840	487,360	2
Wholesale Trade	251,720	276,370	10
Retail Trade	570,890	620,130	9
Transportation and Warehousing	266,400	318,970	20
Information	98,800	103,210	4
Finance and Insurance	416,310	507,460	22
Real Estate and Rental and Leasing	223,290	269,710	21
Professional, Scientific, and Technical Services	416,850	521,040	25
Management of Companies and Enterprises	84,560	95,370	13
Administrative and Support and Waste Management and Remediation Services	394,220	510,620	30
Educational Services	164,130	220,700	34
Healthcare and Social Assistance	675,270	848,880	26
Arts, Entertainment, and Recreation	119,700	145,380	21
Accommodation and Food Services	381,750	454,450	19
Other Services (except Public Administration)	303,560	356,650	17
Government	684,370	743,690	9
TOTAL	5,909,750	6,899,360	17

JOB OPENINGS BY OCCUPATION AND EDUCATION LEVEL (IN THOUSANDS)

OCCUPATION	Less than high school	High school diploma	Some college/ no degree	Associate's degree	Bachelor's degree	Master's degree or better
Managerial and Professional Office	4	30	51	26	151	95
STEM	1	4	10	8	41	24
Social Sciences	0	0	0	0	2	10
Community Services and Arts	2	5	10	6	49	25
Education	0	4	10	5	55	76
Healthcare Professional and Technical	1	7	14	25	34	34
Healthcare Support	4	18	26	6	5	1
Food and Personal Services	72	123	91	34	48	8
Sales and Office Support	24	136	175	53	160	32
Blue Collar	81	200	113	33	28	5
TOTAL	189	527	499	197	573	311

RECOVERY:

36 Projections of jobs and education requirements through 2020



2020 TOTAL JOBS BY OCCUPATION AND EDUCATION LEVEL

OCCUPATION	Less than high school	High school diploma	Some college/ no degree	Associate's degree	Bachelor's degree	Master's degree or better
Managerial and Professional Office:						
Management	9,360	59,930	89,830	42,630	198,340	126,810
Business operations	3,740	20,200	37,960	17,350	113,000	54,880
Financial services	170	8,730	20,590	14,680	136,750	56,790
Legal	-	2,220	4,540	2,920	5,340	46,120
STEM :						
Computers & mathematical sciences	800	5,880	19,300	14,110	78,700	36,170
Architecture	60	290	2,460	2,050	6,440	4,580
Engineering	760	4,850	6,840	6,480	31,490	17,030
Life & physical sciences	320	2,280	880	1,370	8,170	15,470
Social Sciences	-	-	-	130	5,450	28,740
Community Services and Arts:						
Community & social services	1,970	5,270	10,330	3,280	38,100	40,880
Arts, design, entertainment, sports & media	3,920	8,540	20,950	13,510	110,200	33,460
Education, Training & Library	500	11,210	28,770	16,310	164,600	229,040
Healthcare Professional & Technical	1,720	21,360	43,310	73,800	102,920	102,560
Healthcare Support	11,270	53,220	77,610	18,980	13,760	4,220
Food and Personal Services:						
Food preparation & serving related	121,340	155,250	82,780	28,550	50,480	7,550
Building and grounds cleaning & maintenance	69,430	105,150	56,740	15,290	13,130	870
Personal care & services	26,160	85,150	87,080	40,140	44,220	8,750
Protective services	890	24,050	46,730	19,540	35,700	7,330
Sales and Office Support:						
Sales & related	39,950	167,890	198,680	66,930	304,860	65,110
Office & administrative support	31,810	241,730	326,320	92,910	176,920	30,510
Blue Collar:						
Farming, fishing & forestry	5,110	6,580	2,850	1,120	2,500	-
Construction & extraction	40,080	125,820	73,150	21,000	13,400	3,290
Installation, maintenance & repair	18,690	82,830	63,010	29,950	13,760	5,540
Production	96,260	174,980	94,690	23,730	22,360	4,090
Transportation & material moving	83,260	211,480	105,460	23,760	32,010	3,120

