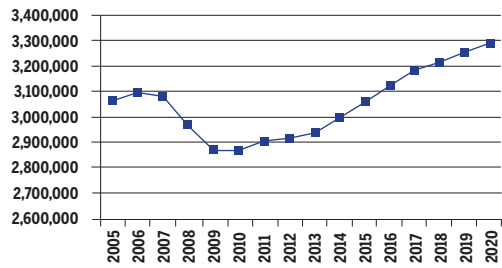


INDIANA
2010-2020 Total Job Openings 1,096,000

IN TOTAL JOBS, excluding military



OCCUPATION	2010 jobs	2020 jobs	Growth rate (%)
Managerial and Professional Office	329,250	381,760	16
STEM	97,350	115,000	18
Social Sciences	8,800	10,730	22
Community Services and Arts	107,340	125,250	17
Education	157,070	184,110	17
Healthcare Professional and Technical	144,640	183,240	27
Healthcare Support	74,610	98,690	32
Food and Personal Services	460,670	526,260	14
Sales and Office Support	733,990	819,440	12
Blue Collar	761,860	850,400	12
TOTAL	2,875,570	3,294,860	15

INDUSTRY	2010 jobs	2020 jobs	Growth rate (%)
Agriculture, Forestry, Fishing and Hunting	62,670	62,800	0
Mining, Quarrying, and Oil and Gas Extraction	9,260	11,670	26
Utilities	12,720	12,040	-5
Construction	151,220	181,530	20
Manufacturing	381,670	402,280	5
Wholesale Trade	101,220	108,240	7
Retail Trade	304,730	321,470	5
Transportation and Warehousing	125,400	143,260	14
Information	35,930	38,800	8
Finance and Insurance	123,270	151,160	23
Real Estate and Rental and Leasing	101,420	123,620	22
Professional, Scientific, and Technical Services	129,840	163,040	26
Management of Companies and Enterprises	24,380	25,950	6
Administrative and Support and Waste Management and Remediation Services	166,990	215,680	29
Educational Services	65,320	88,590	36
Healthcare and Social Assistance	324,700	416,400	28
Arts, Entertainment, and Recreation	57,020	65,610	15
Accommodation and Food Services	200,490	224,190	12
Other Services (except Public Administration)	148,090	164,650	11
Government	349,250	373,900	7
TOTAL	2,875,570	3,294,860	15

JOB OPENINGS BY OCCUPATION AND EDUCATION LEVEL (IN THOUSANDS)

OCCUPATION	Less than high school	High school diploma	Some college/ no degree	Associate's degree	Bachelor's degree	Master's degree or better
Managerial and Professional Office	2	20	23	11	50	20
STEM	0	3	6	5	18	6
Social Sciences	0	0	0	0	0	4
Community Services and Arts	0	5	7	5	17	9
Education	0	3	3	2	24	30
Healthcare Professional and Technical	0	4	10	17	17	14
Healthcare Support	2	10	11	6	2	1
Food and Personal Services	29	74	41	14	15	2
Sales and Office Support	12	91	78	28	56	8
Blue Collar	36	141	66	21	17	2
TOTAL	83	350	245	107	216	94

RECOVERY:



2020 TOTAL JOBS BY OCCUPATION AND EDUCATION LEVEL

OCCUPATION	Less than high school	High school diploma	Some college/ no degree	Associate's degree	Bachelor's degree	Master's degree or better
Managerial and Professional Office:						
Management	6,950	43,980	49,040	19,240	74,290	33,130
Business operations	510	10,610	12,240	5,080	31,310	7,250
Financial services	-	4,950	5,900	6,770	43,570	8,820
Legal	-	1,480	1,080	1,990	2,130	11,430
STEM :						
Computers & mathematical sciences	-	3,650	9,110	8,340	25,950	6,830
Architecture	-	220	3,250	1,360	2,920	170
Engineering	670	3,580	5,000	4,380	18,280	6,210
Life & physical sciences	-	1,570	1,890	670	6,100	5,350
Social Sciences	-	-	-	-	-	10,230
Community Services and Arts:						
Community & social services	-	4,680	6,620	2,630	18,410	13,480
Arts, design, entertainment, sports & media	-	8,930	13,270	11,170	32,020	14,030
Education, Training & Library	500	8,740	9,010	5,050	71,450	89,360
Healthcare Professional & Technical	1,020	11,280	31,210	49,630	50,670	41,420
Healthcare Support	7,470	29,070	33,930	17,540	6,250	2,450
Food and Personal Services:						
Food preparation & serving related	57,020	102,570	51,550	12,430	15,630	2,750
Building and grounds cleaning & maintenance	23,310	57,890	25,110	6,850	5,700	480
Personal care & services	7,180	48,100	26,700	15,080	13,980	1,230
Protective services	450	14,520	19,140	6,780	11,240	570
Sales and Office Support:						
Sales & related	18,140	116,140	98,700	36,380	107,010	16,330
Office & administrative support	17,520	156,830	136,460	48,670	61,000	6,260
Blue Collar:						
Farming, fishing & forestry	1,270	5,990	3,430	1,150	1,800	-
Construction & extraction	23,150	76,030	36,880	12,760	9,110	1,340
Installation, maintenance & repair	8,390	61,010	35,570	18,220	8,850	260
Production	37,120	153,240	69,380	19,680	19,600	2,130
Transportation & material moving	39,580	128,030	52,960	10,930	10,830	1,690

