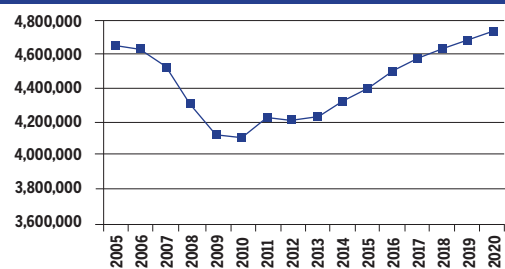


MICHIGAN
2010-2020 Total Job Openings 1,579,000

MI TOTAL JOBS, excluding military



OCCUPATION	2010 jobs	2020 jobs	Growth rate (%)
Managerial and Professional Office	541,630	645,130	19
STEM	196,340	227,790	16
Social Sciences	19,040	23,550	24
Community Services and Arts	175,030	209,560	20
Education	219,620	250,380	14
Healthcare Professional and Technical	209,330	257,810	23
Healthcare Support	129,650	171,360	32
Food and Personal Services	666,240	766,610	15
Sales and Office Support	1,073,400	1,210,250	13
Blue Collar	879,460	981,930	12
TOTAL	4,109,740	4,744,360	15

INDUSTRY	2010 jobs	2020 jobs	Growth rate (%)
Agriculture, Forestry, Fishing and Hunting	64,500	65,510	2
Mining, Quarrying, and Oil and Gas Extraction	14,620	20,730	42
Utilities	16,530	16,880	2
Construction	183,200	212,910	16
Manufacturing	412,380	434,050	5
Wholesale Trade	138,730	152,330	10
Retail Trade	443,670	472,270	6
Transportation and Warehousing	123,350	143,020	16
Information	56,090	60,760	8
Finance and Insurance	194,290	236,800	22
Real Estate and Rental and Leasing	177,450	210,640	19
Professional, Scientific, and Technical Services	278,530	358,340	29
Management of Companies and Enterprises	45,450	54,940	21
Administrative and Support and Waste Management and Remediation Services	278,430	369,300	33
Educational Services	88,530	116,440	32
Healthcare and Social Assistance	522,540	651,910	25
Arts, Entertainment, and Recreation	82,210	97,340	18
Accommodation and Food Services	284,570	313,580	10
Other Services (except Public Administration)	204,160	234,440	15
Government	500,530	522,170	4
TOTAL	4,109,740	4,744,360	15

JOB OPENINGS BY OCCUPATION AND EDUCATION LEVEL (IN THOUSANDS)

OCCUPATION	Less than high school	High school diploma	Some college/ no degree	Associate's degree	Bachelor's degree	Master's degree or better
Managerial and Professional Office	2	24	37	17	85	49
STEM	1	3	10	8	35	18
Social Sciences	0	0	0	0	1	7
Community Services and Arts	0	6	11	6	29	17
Education	0	3	5	2	28	46
Healthcare Professional and Technical	0	5	12	20	23	27
Healthcare Support	3	19	23	7	2	1
Food and Personal Services	30	91	84	23	25	2
Sales and Office Support	12	112	134	43	88	13
Blue Collar	36	146	97	24	22	2
TOTAL	85	408	412	150	339	184

RECOVERY:



2020 TOTAL JOBS BY OCCUPATION AND EDUCATION LEVEL

OCCUPATION	Less than high school	High school diploma	Some college/ no degree	Associate's degree	Bachelor's degree	Master's degree or better
Managerial and Professional Office:						
Management	5,930	47,960	67,410	28,580	120,630	73,760
Business operations	740	14,920	27,380	11,810	58,740	18,490
Financial services	490	6,140	13,590	9,530	72,520	30,250
Legal	-	2,560	2,970	1,420	4,160	25,150
STEM :						
Computers & mathematical sciences	1,310	3,870	15,330	10,770	46,000	18,370
Architecture	-	1,500	1,430	3,830	3,420	1,160
Engineering	240	3,880	10,420	8,390	50,250	26,560
Life & physical sciences	40	850	3,180	1,790	7,140	9,610
Social Sciences	-	-	-	-	1,760	20,250
Community Services and Arts:						
Community & social services	170	4,000	7,240	4,320	27,630	31,540
Arts, design, entertainment, sports & media	540	12,590	25,820	15,140	60,320	20,250
Education, Training & Library	500	8,240	14,830	5,390	83,160	138,260
Healthcare Professional & Technical	480	14,690	35,270	60,800	69,890	79,620
Healthcare Support	10,310	56,500	69,510	21,220	6,930	3,940
Food and Personal Services:						
Food preparation & serving related	42,440	116,980	97,760	24,010	30,750	830
Building and grounds cleaning & maintenance	26,050	81,100	60,710	7,970	6,660	1,210
Personal care & services	20,950	64,180	73,100	22,340	20,730	2,960
Protective services	1,050	10,610	19,860	13,840	18,230	2,320
Sales and Office Support:						
Sales & related	21,010	161,420	181,670	50,210	162,750	25,760
Office & administrative support	15,390	175,630	222,160	77,760	102,610	13,860
Blue Collar:						
Farming, fishing & forestry	4,180	8,760	3,520	750	1,020	300
Construction & extraction	14,700	76,120	58,270	16,960	11,880	930
Installation, maintenance & repair	14,710	64,440	53,050	20,350	10,640	1,630
Production	39,530	159,140	108,780	22,730	24,160	3,670
Transportation & material moving	35,710	129,780	66,480	11,810	17,300	620

