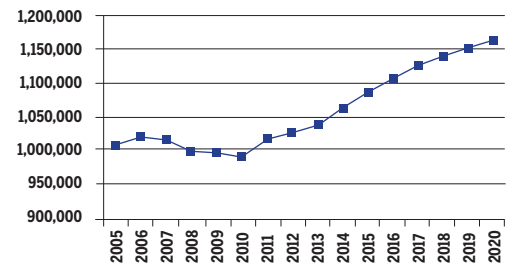


NEBRASKA
2010-2020 Total Job Openings 387,000

NE TOTAL JOBS, excluding military



OCCUPATION	2010 jobs	2020 jobs	Growth rate (%)
Managerial and Professional Office	138,720	161,470	16
STEM	32,290	40,340	25
Social Sciences	4,400	5,710	30
Community Services and Arts	38,990	46,890	20
Education	57,250	68,120	19
Healthcare Professional and Technical	46,540	56,780	22
Healthcare Support	24,300	30,590	26
Food and Personal Services	148,210	174,950	18
Sales and Office Support	268,460	306,830	14
Blue Collar	231,410	270,920	17
TOTAL	990,560	1,162,610	17

INDUSTRY	2010 jobs	2020 jobs	Growth rate (%)
Agriculture, Forestry, Fishing and Hunting	50,290	47,990	-5
Mining, Quarrying, and Oil and Gas Extraction	2,170	3,050	40
Utilities	1,510	1,700	13
Construction	53,220	64,550	21
Manufacturing	78,500	89,220	14
Wholesale Trade	35,760	38,980	9
Retail Trade	105,950	116,290	10
Transportation and Warehousing	52,550	63,950	22
Information	15,750	17,570	12
Finance and Insurance	66,340	83,200	25
Real Estate and Rental and Leasing	30,820	38,420	25
Professional, Scientific, and Technical Services	50,360	65,490	30
Management of Companies and Enterprises	14,780	18,270	24
Administrative and Support and Waste Management and Remediation Services	46,740	60,960	30
Educational Services	18,940	22,670	20
Healthcare and Social Assistance	107,540	131,250	22
Arts, Entertainment, and Recreation	17,870	21,090	18
Accommodation and Food Services	60,610	70,300	16
Other Services (except Public Administration)	49,570	57,410	16
Government	131,290	150,230	14
TOTAL	990,560	1,162,610	17

JOB OPENINGS BY OCCUPATION AND EDUCATION LEVEL (IN THOUSANDS)

OCCUPATION	Less than high school	High school diploma	Some college/ no degree	Associate's degree	Bachelor's degree	Master's degree or better
Managerial and Professional Office	1	8	11	6	20	8
STEM	0	1	3	2	5	3
Social Sciences	0	0	0	0	0	2
Community Services and Arts	1	1	2	1	9	3
Education	0	1	3	0	10	9
Healthcare Professional and Technical	0	1	1	5	6	6
Healthcare Support	1	3	4	1	0	0
Food and Personal Services	4	21	20	6	7	1
Sales and Office Support	3	21	37	12	26	3
Blue Collar	15	35	23	11	7	0
TOTAL	24	91	104	44	90	34

RECOVERY:



2020 TOTAL JOBS BY OCCUPATION AND EDUCATION LEVEL

OCCUPATION	Less than high school	High school diploma	Some college/ no degree	Associate's degree	Bachelor's degree	Master's degree or better
Managerial and Professional Office:						
Management	2,090	17,990	19,490	11,690	28,150	12,710
Business operations	210	3,350	9,070	2,390	11,190	4,730
Financial services	-	1,950	4,260	2,870	19,250	4,080
Legal	-	140	1,110	820	870	3,050
STEM :						
Computers & mathematical sciences	140	1,680	5,900	4,230	9,340	2,580
Architecture	-	-	150	610	1,800	300
Engineering	-	320	1,070	990	3,050	3,310
Life & physical sciences	610	-	850	550	1,300	1,640
Social Sciences	-	-	960	-	-	4,670
Community Services and Arts:						
Community & social services	-	490	2,510	1,390	9,750	5,500
Arts, design, entertainment, sports & media	1,980	3,130	2,460	1,180	16,050	2,460
Education, Training & Library	160	3,490	8,110	1,120	29,490	25,750
Healthcare Professional & Technical	-	2,490	3,690	14,380	18,510	17,950
Healthcare Support	2,450	8,730	13,150	4,320	980	730
Food and Personal Services:						
Food preparation & serving related	6,600	30,240	26,430	4,790	6,260	-
Building and grounds cleaning & maintenance	4,880	18,320	11,260	4,620	3,120	-
Personal care & services	1,000	10,060	15,610	6,870	8,430	1,210
Protective services	20	3,700	6,210	1,060	3,420	850
Sales and Office Support:						
Sales & related	1,560	30,820	45,500	16,510	44,520	6,350
Office & administrative support	6,300	32,200	67,040	19,050	33,400	3,590
Blue Collar:						
Farming, fishing & forestry	2,010	4,370	3,530	1,830	690	-
Construction & extraction	8,650	24,300	11,350	6,340	4,120	150
Installation, maintenance & repair	4,240	11,350	11,830	13,150	1,960	190
Production	17,320	30,020	16,400	6,430	6,710	-
Transportation & material moving	11,550	34,460	25,020	5,170	6,760	1,010

