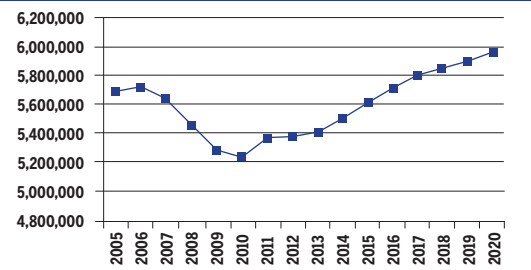


OHIO
2010-2020 Total Job Openings 1,986,000

OH TOTAL JOBS, excluding military



OCCUPATION	2010 jobs	2020 jobs	Growth rate (%)
Managerial and Professional Office	645,240	755,470	17
STEM	210,460	248,850	18
Social Sciences	20,060	24,400	22
Community Services and Arts	209,870	245,060	17
Education	289,130	327,360	13
Healthcare Professional and Technical	278,500	340,250	22
Healthcare Support	181,950	247,600	36
Food and Personal Services	843,490	972,870	15
Sales and Office Support	1,389,700	1,533,290	10
Blue Collar	1,183,770	1,271,890	7
TOTAL	5,252,160	5,967,040	14

INDUSTRY	2010 jobs	2020 jobs	Growth rate (%)
Agriculture, Forestry, Fishing and Hunting	75,040	71,900	-4
Mining, Quarrying, and Oil and Gas Extraction	23,070	30,980	34
Utilities	17,170	16,340	-5
Construction	245,330	282,370	15
Manufacturing	535,340	526,990	-2
Wholesale Trade	194,020	212,700	10
Retail Trade	547,510	572,290	5
Transportation and Warehousing	196,780	221,040	12
Information	76,790	79,030	3
Finance and Insurance	274,220	330,650	21
Real Estate and Rental and Leasing	193,730	235,260	21
Professional, Scientific, and Technical Services	304,070	383,550	26
Management of Companies and Enterprises	93,970	106,530	13
Administrative and Support and Waste Management and Remediation Services	316,700	393,640	24
Educational Services	128,280	156,560	22
Healthcare and Social Assistance	682,510	870,570	28
Arts, Entertainment, and Recreation	97,790	115,900	19
Accommodation and Food Services	362,290	405,260	12
Other Services (except Public Administration)	248,520	285,460	15
Government	639,050	670,030	5
TOTAL	5,252,160	5,967,040	14

JOB OPENINGS BY OCCUPATION AND EDUCATION LEVEL (IN THOUSANDS)

OCCUPATION	Less than high school	High school diploma	Some college/ no degree	Associate's degree	Bachelor's degree	Master's degree or better
Managerial and Professional Office	3	32	42	22	101	51
STEM	0	7	13	10	37	16
Social Sciences	0	0	0	0	3	5
Community Services and Arts	0	6	9	7	42	18
Education	1	7	6	4	30	62
Healthcare Professional and Technical	0	9	14	32	28	30
Healthcare Support	6	31	27	13	4	1
Food and Personal Services	38	143	81	28	30	4
Sales and Office Support	16	158	155	54	110	17
Blue Collar	47	231	95	28	21	2
TOTAL	112	623	441	196	406	206

RECOVERY:



2020 TOTAL JOBS BY OCCUPATION AND EDUCATION LEVEL

OCCUPATION	Less than high school	High school diploma	Some college/ no degree	Associate's degree	Bachelor's degree	Master's degree or better
Managerial and Professional Office:						
Management	8,020	63,200	73,290	33,550	145,630	67,480
Business operations	550	21,350	35,320	13,350	63,020	27,610
Financial services	-	9,570	14,310	15,750	91,150	30,180
Legal	460	2,600	2,740	4,070	4,700	27,580
STEM :						
Computers & mathematical sciences	410	9,550	25,770	15,060	67,410	22,160
Architecture	180	2,150	3,430	3,140	2,970	2,490
Engineering	430	5,460	7,810	9,370	32,210	13,860
Life & physical sciences	80	2,670	2,360	1,250	8,950	10,170
Social Sciences	-	-	-	-	8,400	15,520
Community Services and Arts:						
Community & social services	780	6,690	7,450	6,580	42,890	30,730
Arts, design, entertainment, sports & media	680	11,160	18,830	13,740	82,480	23,040
Education, Training & Library	2,990	19,960	17,960	10,570	90,100	185,790
Healthcare Professional & Technical	1,190	26,230	43,100	95,270	85,060	90,610
Healthcare Support	18,210	92,430	79,760	39,710	12,910	3,360
Food and Personal Services:						
Food preparation & serving related	61,070	190,480	112,730	41,380	24,700	3,450
Building and grounds cleaning & maintenance	33,210	123,020	39,270	14,060	10,650	350
Personal care & services	16,840	90,420	52,340	16,700	31,920	3,910
Protective services	2,470	26,000	38,490	12,870	22,700	3,830
Sales and Office Support:						
Sales & related	27,430	211,400	188,100	56,850	204,920	33,900
Office & administrative support	19,800	263,670	278,130	104,230	126,840	18,020
Blue Collar:						
Farming, fishing & forestry	5,670	3,810	1,100	1,620	3,470	250
Construction & extraction	29,150	124,840	60,770	12,280	10,670	890
Installation, maintenance & repair	15,650	111,710	51,700	24,280	7,750	240
Production	43,950	236,060	88,320	28,270	21,750	3,030
Transportation & material moving	48,000	218,150	82,410	16,180	18,050	1,860

