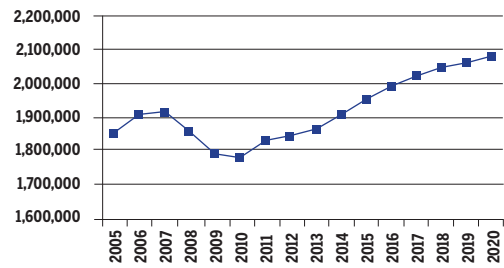


OREGON
2010-2020 Total Job Openings 694,000

OR TOTAL JOBS, excluding military



OCCUPATION	2010 jobs	2020 jobs	Growth rate (%)
Managerial and Professional Office	252,820	297,660	18
STEM	78,580	93,130	19
Social Sciences	9,920	12,460	26
Community Services and Arts	96,150	119,000	24
Education	106,330	124,480	17
Healthcare Professional and Technical	75,000	96,180	28
Healthcare Support	41,480	55,560	34
Food and Personal Services	285,580	339,040	19
Sales and Office Support	461,330	530,440	15
Blue Collar	379,410	417,340	10
TOTAL	1,786,610	2,085,270	17

INDUSTRY	2010 jobs	2020 jobs	Growth rate (%)
Agriculture, Forestry, Fishing and Hunting	80,110	82,170	3
Mining, Quarrying, and Oil and Gas Extraction	3,650	4,690	29
Utilities	3,990	4,080	2
Construction	86,680	92,6430	7
Manufacturing	147,610	161,920	10
Wholesale Trade	66,390	74,990	13
Retail Trade	187,900	214,360	14
Transportation and Warehousing	55,890	63,310	13
Information	32,240	35,380	10
Finance and Insurance	79,570	99,080	25
Real Estate and Rental and Leasing	82,320	100,020	22
Professional, Scientific, and Technical Services	108,200	136,010	26
Management of Companies and Enterprises	26,480	30,040	13
Administrative and Support and Waste Management and Remediation Services	91,980	110,100	20
Educational Services	44,570	53,190	19
Healthcare and Social Assistance	208,240	270,800	30
Arts, Entertainment, and Recreation	42,990	56,530	31
Accommodation and Food Services	125,980	148,150	18
Other Services (except Public Administration)	80,460	91,740	14
Government	231,390	256,080	11
TOTAL	1,786,610	2,085,270	17

JOB OPENINGS BY OCCUPATION AND EDUCATION LEVEL (IN THOUSANDS)

OCCUPATION	Less than high school	High school diploma	Some college/ no degree	Associate's degree	Bachelor's degree	Master's degree or better
Managerial and Professional Office	2	11	22	8	39	18
STEM	0	2	4	4	14	8
Social Sciences	0	0	0	0	1	3
Community Services and Arts	0	3	7	3	21	6
Education	0	1	3	2	11	24
Healthcare Professional and Technical	0	1	4	6	9	12
Healthcare Support	1	4	7	3	2	1
Food and Personal Services	25	32	35	8	11	2
Sales and Office Support	7	42	67	18	37	6
Blue Collar	30	52	38	11	8	1
TOTAL	66	148	187	61	152	80

RECOVERY:



2020 TOTAL JOBS BY OCCUPATION AND EDUCATION LEVEL

OCCUPATION	Less than high school	High school diploma	Some college/ no degree	Associate's degree	Bachelor's degree	Master's degree or better
Managerial and Professional Office:						
Management	5,710	22,370	40,570	12,100	62,790	30,120
Business operations	690	5,710	14,090	3,770	26,360	6,820
Financial services	-	5,100	8,400	5,750	24,580	8,570
Legal	-	1,110	2,130	1,220	2,160	7,520
STEM :						
Computers & mathematical sciences	330	3,400	6,240	4,980	21,880	7,560
Architecture	-	300	300	1,220	3,800	1,150
Engineering	110	1,120	3,630	3,210	10,420	7,800
Life & physical sciences	-	-	1,590	1,320	5,680	7,710
Social Sciences	-	-	1,330	-	2,220	8,290
Community Services and Arts:						
Community & social services	120	2,180	6,100	4,400	19,780	9,810
Arts, design, entertainment, sports & media	-	6,630	14,570	5,640	42,230	7,540
Education, Training & Library	930	4,140	10,310	5,710	32,380	71,010
Healthcare Professional & Technical	860	2,510	12,360	17,280	27,350	36,550
Healthcare Support	3,510	13,470	20,720	9,150	6,200	1,790
Food and Personal Services:						
Food preparation & serving related	42,840	35,600	40,060	8,340	16,600	3,260
Building and grounds cleaning & maintenance	19,430	23,570	16,250	3,310	4,730	500
Personal care & services	12,750	30,460	37,040	7,080	7,210	1,130
Protective services	130	6,120	10,620	5,200	5,630	1,210
Sales and Office Support:						
Sales & related	12,100	63,930	85,390	26,150	68,110	12,110
Office & administrative support	8,850	61,850	116,240	26,800	42,010	6,890
Blue Collar:						
Farming, fishing & forestry	17,860	8,580	4,250	1,080	2,140	540
Construction & extraction	14,330	36,120	21,150	5,290	3,390	-
Installation, maintenance & repair	6,260	19,770	24,140	9,990	5,560	380
Production	23,340	42,590	32,650	9,920	7,610	490
Transportation & material moving	27,840	48,660	30,780	5,740	6,240	680

