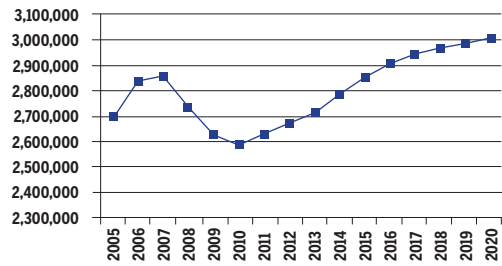


## ARIZONA

2010-2020 Total Job Openings 1,001,000

### AZ TOTAL JOBS, excluding military



OCCUPATION	2010 jobs	2020 jobs	Growth rate (%)
Managerial and Professional Office	372,320	457,070	23
STEM	112,730	126,780	12
Social Sciences	12,940	16,040	24
Community Services and Arts	103,840	124,130	20
Education	133,740	159,000	19
Healthcare Professional and Technical	111,990	141,830	27
Healthcare Support	62,870	83,610	33
Food and Personal Services	449,860	534,600	19
Sales and Office Support	764,730	879,020	15
Blue Collar	464,130	485,710	5
<b>TOTAL</b>	<b>2,589,140</b>	<b>3,007,770</b>	<b>16</b>

INDUSTRY	2010 jobs	2020 jobs	Growth rate (%)
Agriculture, Forestry, Fishing and Hunting	34,380	39,890	16
Mining, Quarrying, and Oil and Gas Extraction	13,960	16,530	18
Utilities	10,310	11,730	14
Construction	133,740	130,670	-2
Manufacturing	134,110	139,110	4
Wholesale Trade	88,590	100,060	13
Retail Trade	291,880	321,380	10
Transportation and Warehousing	80,280	91,800	14
Information	39,120	39,630	1
Finance and Insurance	169,670	211,040	24
Real Estate and Rental and Leasing	156,560	199,310	27
Professional, Scientific, and Technical Services	169,600	200,130	18
Management of Companies and Enterprises	25,630	31,840	24
Administrative and Support and Waste Management and Remediation Services	207,040	254,180	23
Educational Services	58,770	85,340	45
Healthcare and Social Assistance	279,100	358,700	29
Arts, Entertainment, and Recreation	55,080	65,910	20
Accommodation and Food Services	193,700	225,330	16
Other Services (except Public Administration)	113,860	126,780	11
Government	333,780	358,450	7
<b>TOTAL</b>	<b>2,589,140</b>	<b>3,007,770</b>	<b>16</b>

### JOB OPENINGS BY OCCUPATION AND EDUCATION LEVEL (IN THOUSANDS)

OCCUPATION	Less than high school	High school diploma	Some college/ no degree	Associate's degree	Bachelor's degree	Master's degree or better
Managerial and Professional Office	2	17	36	15	55	27
STEM	1	2	9	5	16	9
Social Sciences	0	0	0	0	1	4
Community Services and Arts	1	5	9	4	17	5
Education	1	2	5	2	21	21
Healthcare Professional and Technical	0	3	6	12	12	15
Healthcare Support	1	7	13	4	2	0
Food and Personal Services	45	54	47	13	16	3
Sales and Office Support	15	77	110	28	54	9
Blue Collar	34	61	43	11	11	2
<b>TOTAL</b>	<b>100</b>	<b>229</b>	<b>277</b>	<b>94</b>	<b>206</b>	<b>95</b>

#### RECOVERY:

14 Projections of jobs and education requirements through 2020



## 2020 TOTAL JOBS BY OCCUPATION AND EDUCATION LEVEL

OCCUPATION	Less than high school	High school diploma	Some college/ no degree	Associate's degree	Bachelor's degree	Master's degree or better
<b>Managerial and Professional Office:</b>						
Management	5,590	32,130	62,480	19,280	82,820	39,740
Business operations	1,570	10,800	23,640	11,660	25,240	11,590
Financial services	-	8,670	18,310	10,230	54,140	15,580
Legal	-	750	3,450	3,190	3,200	13,040
<b>STEM :</b>						
Computers & mathematical sciences	260	5,120	15,870	9,160	26,340	9,720
Architecture	1,140	350	2,440	1,110	2,720	1,080
Engineering	390	1,590	6,380	4,460	16,120	9,490
Life & physical sciences	500	150	1,760	920	4,230	6,290
<b>Social Sciences</b>	-	-	670	-	3,480	11,070
<b>Community Services and Arts:</b>						
Community & social services	870	3,360	8,110	3,450	15,770	8,040
Arts, design, entertainment, sports & media	3,130	12,460	18,830	8,860	34,420	6,830
<b>Education, Training &amp; Library</b>	2,290	5,900	15,240	6,800	64,180	64,580
<b>Healthcare Professional &amp; Technical</b>	130	9,250	18,330	35,570	36,200	43,740
<b>Healthcare Support</b>	3,500	20,590	39,300	10,940	7,050	850
<b>Food and Personal Services:</b>						
Food preparation & serving related	67,010	73,470	43,550	13,500	14,500	2,190
Building and grounds cleaning & maintenance	55,370	36,060	21,920	4,720	5,510	500
Personal care & services	11,010	39,380	42,940	9,930	13,030	3,640
Protective services	1,360	13,430	32,160	11,120	14,880	3,410
<b>Sales and Office Support:</b>						
Sales & related	28,090	108,440	138,110	34,280	106,080	17,510
Office & administrative support	16,370	122,580	190,950	50,460	56,150	10,020
<b>Blue Collar:</b>						
Farming, fishing & forestry	7,930	6,190	3,460	-	200	-
Construction & extraction	30,330	49,920	30,410	5,890	5,960	490
Installation, maintenance & repair	13,720	34,280	31,310	9,740	7,680	1,400
Production	19,590	39,940	30,250	9,410	6,870	1,860
Transportation & material moving	30,930	51,940	33,090	9,370	11,070	2,490

