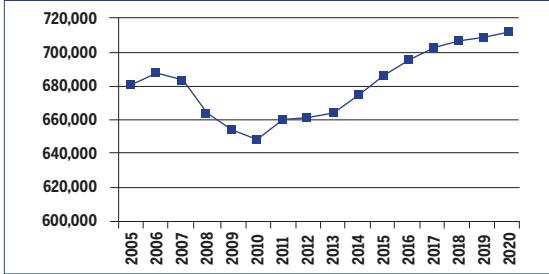


MAINE
2010-2020 Total Job Openings 237,000

ME TOTAL JOBS, excluding military



OCCUPATION	2010 jobs	2020 jobs	Growth rate (%)
Managerial and Professional Office	82,920	93,890	13
STEM	21,370	23,630	11
Social Sciences	2,940	3,300	12
Community Services and Arts	31,050	34,970	13
Education	39,730	44,120	11
Healthcare Professional and Technical	33,080	38,100	15
Healthcare Support	20,940	24,340	16
Food and Personal Services	105,260	117,110	11
Sales and Office Support	165,260	178,860	8
Blue Collar	146,680	155,350	6
TOTAL	649,240	713,670	10

INDUSTRY	2010 jobs	2020 jobs	Growth rate (%)
Agriculture, Forestry, Fishing and Hunting	20,090	19,680	-2
Mining, Quarrying, and Oil and Gas Extraction	550	690	26
Utilities	1,630	1,690	4
Construction	43,820	49,480	13
Manufacturing	46,200	47,720	3
Wholesale Trade	17,610	18,700	6
Retail Trade	81,570	86,900	7
Transportation and Warehousing	19,670	20,420	4
Information	9,250	9,270	0
Finance and Insurance	28,590	33,820	18
Real Estate and Rental and Leasing	23,620	29,260	24
Professional, Scientific, and Technical Services	34,510	39,120	13
Management of Companies and Enterprises	6,090	6,290	3
Administrative and Support and Waste Management and Remediation Services	32,000	36,960	15
Educational Services	16,620	21,230	28
Healthcare and Social Assistance	93,250	104,960	13
Arts, Entertainment, and Recreation	15,340	17,610	15
Accommodation and Food Services	46,500	51,970	12
Other Services (except Public Administration)	30,150	33,200	10
Government	82,200	84,710	3
TOTAL	649,240	713,670	10

JOB OPENINGS BY OCCUPATION AND EDUCATION LEVEL (IN THOUSANDS)

OCCUPATION	Less than high school	High school diploma	Some college/ no degree	Associate's degree	Bachelor's degree	Master's degree or better
Managerial and Professional Office	0	6	5	4	11	6
STEM	0	1	1	1	3	1
Social Sciences	0	0	0	0	1	1
Community Services and Arts	0	2	2	1	4	1
Education	0	0	1	1	8	5
Healthcare Professional and Technical	0	1	2	3	3	3
Healthcare Support	0	3	2	1	1	0
Food and Personal Services	2	16	10	3	7	0
Sales and Office Support	1	20	17	9	12	1
Blue Collar	4	27	11	5	4	0
TOTAL	7	76	51	29	55	19

RECOVERY:



2020 TOTAL JOBS BY OCCUPATION AND EDUCATION LEVEL

OCCUPATION	Less than high school	High school diploma	Some college/ no degree	Associate's degree	Bachelor's degree	Master's degree or better
Managerial and Professional Office:						
Management	740	13,820	10,020	5,570	19,300	8,210
Business operations	30	1,980	1,710	2,340	6,200	3,890
Financial services	-	1,250	1,970	2,840	6,520	2,730
Legal	-	-	360	980	210	3,220
STEM :						
Computers & mathematical sciences	-	990	1,620	1,090	5,610	910
Architecture	-	320	1,320	950	200	-
Engineering	-	450	1,340	1,110	3,460	680
Life & physical sciences	-	500	-	-	1,080	2,300
Social Sciences	-	-	-	-	1,610	1,400
Community Services and Arts:						
Community & social services	-	1,790	1,690	460	4,380	3,890
Arts, design, entertainment, sports & media	-	5,020	4,840	3,520	8,850	560
Education, Training & Library	-	1,190	1,550	2,250	23,520	15,620
Healthcare Professional & Technical	-	2,650	4,920	10,330	10,290	10,020
Healthcare Support	750	10,480	6,680	4,260	2,070	-
Food and Personal Services:						
Food preparation & serving related	2,070	19,490	11,500	4,010	11,670	230
Building and grounds cleaning & maintenance	2,300	15,920	6,380	1,250	3,650	-
Personal care & services	1,850	11,460	8,960	2,380	4,380	-
Protective services	-	1,720	3,720	1,070	2,570	520
Sales and Office Support:						
Sales & related	930	31,170	21,240	10,460	21,370	1,690
Office & administrative support	890	29,130	29,560	15,540	15,130	1,730
Blue Collar:						
Farming, fishing & forestry	2,200	5,300	1,620	430	190	-
Construction & extraction	4,130	21,090	10,580	4,440	3,000	-
Installation, maintenance & repair	2,410	11,880	5,530	4,900	2,410	320
Production	1,390	18,600	9,950	2,850	4,140	-
Transportation & material moving	2,050	23,050	6,110	3,640	2,620	540

