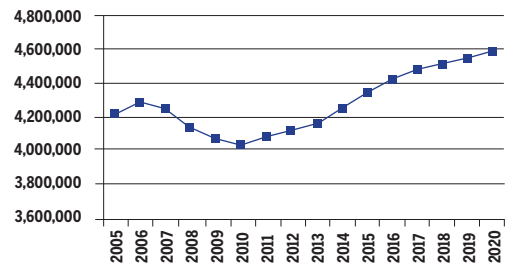


NEW JERSEY
2010-2020 Total Job Openings 1,526,000

NJ TOTAL JOBS, excluding military



OCCUPATION	2010 jobs	2020 jobs	Growth rate (%)
Managerial and Professional Office	608,260	728,870	20
STEM	198,690	219,990	11
Social Sciences	22,220	27,050	22
Community Services and Arts	178,680	209,600	17
Education	256,420	296,720	16
Healthcare Professional and Technical	185,180	218,880	18
Healthcare Support	109,810	138,410	26
Food and Personal Services	605,560	690,820	14
Sales and Office Support	1,181,030	1,318,580	12
Blue Collar	695,320	735,590	6
TOTAL	4,041,160	4,584,520	13

INDUSTRY	2010 jobs	2020 jobs	Growth rate (%)
Agriculture, Forestry, Fishing and Hunting	18,780	19,750	5
Mining, Quarrying, and Oil and Gas Extraction	3,160	4,460	41
Utilities	12,280	11,960	-3
Construction	176,180	198,170	12
Manufacturing	223,830	201,260	-10
Wholesale Trade	190,000	205,870	8
Retail Trade	421,580	457,440	9
Transportation and Warehousing	178,980	195,800	9
Information	78,140	76,940	-2
Finance and Insurance	281,170	363,060	29
Real Estate and Rental and Leasing	220,060	276,310	26
Professional, Scientific, and Technical Services	344,190	406,580	18
Management of Companies and Enterprises	64,810	73,330	13
Administrative and Support and Waste Management and Remediation Services	248,670	284,640	14
Educational Services	100,770	123,460	23
Healthcare and Social Assistance	472,390	573,010	21
Arts, Entertainment, and Recreation	85,270	99,600	17
Accommodation and Food Services	251,410	281,570	12
Other Services (except Public Administration)	175,600	198,790	13
Government	493,910	532,520	8
TOTAL	4,041,160	4,584,520	13

JOB OPENINGS BY OCCUPATION AND EDUCATION LEVEL (IN THOUSANDS)

OCCUPATION	Less than high school	High school diploma	Some college/ no degree	Associate's degree	Bachelor's degree	Master's degree or better
Managerial and Professional Office	2	24	28	15	110	65
STEM	0	4	8	5	30	26
Social Sciences	0	0	1	0	1	7
Community Services and Arts	1	4	8	6	35	15
Education	1	5	7	3	41	42
Healthcare Professional and Technical	0	5	8	11	23	26
Healthcare Support	4	19	13	4	4	2
Food and Personal Services	33	99	48	16	30	4
Sales and Office Support	18	120	109	38	129	25
Blue Collar	42	117	49	14	20	3
TOTAL	103	396	277	112	424	214

RECOVERY:

70 Projections of jobs and education requirements through 2020



2020 TOTAL JOBS BY OCCUPATION AND EDUCATION LEVEL

OCCUPATION	Less than high school	High school diploma	Some college/ no degree	Associate's degree	Bachelor's degree	Master's degree or better
Managerial and Professional Office:						
Management	5,300	49,830	53,510	22,260	137,490	86,870
Business operations	1,450	13,380	16,710	9,160	75,480	31,490
Financial services	210	6,410	10,130	10,350	109,830	44,700
Legal	430	1,990	2,290	2,230	6,450	30,950
STEM :						
Computers & mathematical sciences	370	6,520	17,350	8,380	60,310	45,470
Architecture	-	1,160	1,010	1,260	6,470	1,930
Engineering	90	3,150	5,200	3,090	15,390	14,840
Life & physical sciences	110	1,320	1,510	990	8,670	15,720
Social Sciences	-	-	1,740	-	3,750	21,240
Community Services and Arts:						
Community & social services	550	5,560	11,670	3,520	26,470	25,500
Arts, design, entertainment, sports & media	3,340	7,700	12,710	13,530	79,500	19,560
Education, Training & Library	3,200	13,840	19,530	9,770	123,690	126,680
Healthcare Professional & Technical	350	13,840	24,480	33,800	70,080	76,840
Healthcare Support	12,950	55,970	38,980	12,110	11,950	5,940
Food and Personal Services:						
Food preparation & serving related	51,090	114,920	39,690	18,850	26,640	3,210
Building and grounds cleaning & maintenance	34,700	75,320	27,110	8,060	9,900	310
Personal care & services	11,350	82,190	47,660	10,800	27,620	4,710
Protective services	2,360	23,840	29,870	11,090	25,140	4,380
Sales and Office Support:						
Sales & related	32,180	137,280	136,110	52,120	248,420	49,260
Office & administrative support	22,980	224,160	190,060	61,620	139,050	25,340
Blue Collar:						
Farming, fishing & forestry	2,940	1,800	1,740	210	1,060	320
Construction & extraction	26,260	84,440	26,090	7,800	12,580	1,100
Installation, maintenance & repair	11,820	64,180	40,950	10,500	8,610	1,970
Production	35,950	72,780	23,790	8,260	14,080	2,760
Transportation & material moving	49,240	126,980	53,720	15,300	25,130	3,210

