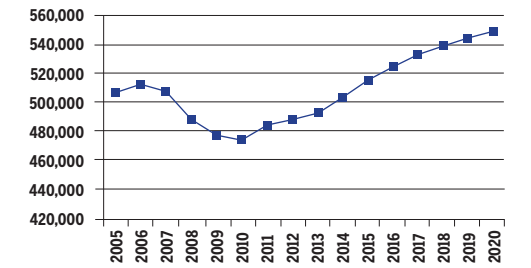


RHODE ISLAND
2010-2020 Total Job Openings 183,000

RI TOTAL JOBS, excluding military



OCCUPATION	2010 jobs	2020 jobs	Growth rate (%)
Managerial and Professional Office	59,510	72,060	21
STEM	18,460	22,900	24
Social Sciences	2,530	3,130	24
Community Services and Arts	24,790	29,020	17
Education	31,760	36,880	16
Healthcare Professional and Technical	25,820	30,450	18
Healthcare Support	18,620	23,020	24
Food and Personal Services	80,960	93,380	15
Sales and Office Support	128,050	146,900	15
Blue Collar	84,380	91,760	9
TOTAL	474,870	549,490	16

INDUSTRY	2010 jobs	2020 jobs	Growth rate (%)
Agriculture, Forestry, Fishing and Hunting	2,450	2,440	0
Mining, Quarrying, and Oil and Gas Extraction	320	400	24
Utilities	970	940	-4
Construction	22,940	25,580	11
Manufacturing	35,080	34,940	0
Wholesale Trade	14,410	16,100	12
Retail Trade	45,530	53,530	18
Transportation and Warehousing	12,060	13,950	16
Information	9,460	11,210	18
Finance and Insurance	29,210	35,820	23
Real Estate and Rental and Leasing	20,530	25,060	22
Professional, Scientific, and Technical Services	30,190	38,310	27
Management of Companies and Enterprises	8,030	9,350	16
Administrative and Support and Waste Management and Remediation Services	25,710	31,650	23
Educational Services	24,360	29,890	23
Healthcare and Social Assistance	71,970	85,300	19
Arts, Entertainment, and Recreation	11,870	13,320	12
Accommodation and Food Services	36,620	42,650	16
Other Services (except Public Administration)	21,090	24,320	15
Government	52,080	54,740	5
TOTAL	474,870	549,490	16

JOB OPENINGS BY OCCUPATION AND EDUCATION LEVEL (IN THOUSANDS)

OCCUPATION	Less than high school	High school diploma	Some college/ no degree	Associate's degree	Bachelor's degree	Master's degree or better
Managerial and Professional Office	1	2	4	1	10	6
STEM	0	0	1	1	3	2
Social Sciences	0	0	0	0	0	1
Community Services and Arts	0	1	1	1	4	3
Education	0	0	1	0	4	7
Healthcare Professional and Technical	0	1	1	2	3	4
Healthcare Support	1	2	3	1	0	0
Food and Personal Services	7	8	7	4	3	1
Sales and Office Support	3	12	14	6	11	2
Blue Collar	4	13	5	2	5	2
TOTAL	15	40	37	20	45	26

RECOVERY:



2020 TOTAL JOBS BY OCCUPATION AND EDUCATION LEVEL

OCCUPATION	Less than high school	High school diploma	Some college/ no degree	Associate's degree	Bachelor's degree	Master's degree or better
Managerial and Professional Office:						
Management	640	5,030	7,850	2,190	13,820	6,980
Business operations	890	650	3,110	710	5,940	1,740
Financial services	580	860	650	530	10,930	4,230
Legal	-	100	130	120	360	4,030
STEM :						
Computers & mathematical sciences	150	1,030	2,500	1,750	4,930	2,130
Architecture	250	-	-	480	250	250
Engineering	-	-	470	690	3,670	2,010
Life & physical sciences	160	-	450	-	430	1,360
Social Sciences	-	-	-	-	1,090	1,940
Community Services and Arts:						
Community & social services	350	200	2,100	610	2,720	5,020
Arts, design, entertainment, sports & media	430	1,710	2,380	990	8,650	3,860
Education, Training & Library	-	1,130	2,000	740	12,950	20,050
Healthcare Professional & Technical	410	2,480	2,710	6,870	8,560	10,760
Healthcare Support	1,940	5,920	8,140	3,840	1,190	650
Food and Personal Services:						
Food preparation & serving related	11,160	9,630	12,850	6,990	3,970	-
Building and grounds cleaning & maintenance	6,830	8,680	1,580	1,190	1,490	-
Personal care & services	2,780	5,040	5,700	1,980	2,020	1,680
Protective services	130	1,580	1,500	2,900	2,860	860
Sales and Office Support:						
Sales & related	2,880	14,570	16,550	8,430	21,780	3,630
Office & administrative support	4,690	22,890	25,370	11,040	12,200	2,870
Blue Collar:						
Farming, fishing & forestry	270	570	240	120	70	-
Construction & extraction	2,190	11,880	4,450	1,860	1,600	-
Installation, maintenance & repair	4,270	7,480	2,530	1,000	1,040	320
Production	3,980	14,720	4,180	2,030	2,570	610
Transportation & material moving	270	3,390	5,130	2,260	9,950	2,790

