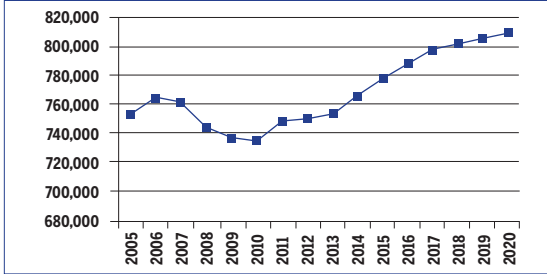


WEST VIRGINIA
2010-2020 Total Job Openings 270,000

WV TOTAL JOBS, excluding military



OCCUPATION	2010 jobs	2020 jobs	Growth rate (%)
Managerial and Professional Office	89,960	101,170	12
STEM	20,580	23,290	13
Social Sciences	2,780	3,210	16
Community Services and Arts	27,220	30,880	13
Education	39,590	44,020	11
Healthcare Professional and Technical	43,830	51,030	16
Healthcare Support	22,110	27,390	24
Food and Personal Services	123,080	139,800	14
Sales and Office Support	191,310	203,810	7
Blue Collar	175,200	185,180	6
TOTAL	735,650	809,790	10

INDUSTRY	2010 jobs	2020 jobs	Growth rate (%)
Agriculture, Forestry, Fishing and Hunting	20,680	20,840	1
Mining, Quarrying, and Oil and Gas Extraction	32,980	37,830	15
Utilities	4,790	4,860	2
Construction	39,590	41,790	6
Manufacturing	42,730	43,510	2
Wholesale Trade	20,490	21,900	7
Retail Trade	86,520	91,750	6
Transportation and Warehousing	23,690	24,450	3
Information	9,810	10,040	2
Finance and Insurance	23,630	26,520	12
Real Estate and Rental and Leasing	20,210	23,740	17
Professional, Scientific, and Technical Services	31,270	35,250	13
Management of Companies and Enterprises	4,970	5,650	13
Administrative and Support and Waste Management and Remediation Services	33,780	40,040	19
Educational Services	10,140	11,540	14
Healthcare and Social Assistance	101,310	118,900	17
Arts, Entertainment, and Recreation	12,870	15,540	21
Accommodation and Food Services	54,850	61,250	12
Other Services (except Public Administration)	39,250	43,500	11
Government	122,110	130,910	7
TOTAL	735,650	809,790	10

JOB OPENINGS BY OCCUPATION AND EDUCATION LEVEL (IN THOUSANDS)

OCCUPATION	Less than high school	High school diploma	Some college/ no degree	Associate's degree	Bachelor's degree	Master's degree or better
Managerial and Professional Office	1	7	7	3	10	6
STEM	0	1	1	1	3	2
Social Sciences	0	0	0	0	0	1
Community Services and Arts	0	1	2	1	5	2
Education	0	1	1	0	5	6
Healthcare Professional and Technical	0	1	3	5	4	3
Healthcare Support	1	4	3	1	1	0
Food and Personal Services	8	21	11	3	3	1
Sales and Office Support	4	28	20	6	9	1
Blue Collar	8	36	12	3	2	1
TOTAL	21	101	61	23	42	22



2020 TOTAL JOBS BY OCCUPATION AND EDUCATION LEVEL

OCCUPATION	Less than high school	High school diploma	Some college/ no degree	Associate's degree	Bachelor's degree	Master's degree or better
Managerial and Professional Office:						
Management	1,820	16,700	14,960	6,550	15,350	8,900
Business operations	70	4,230	4,770	630	5,110	1,280
Financial services	-	1,490	2,390	1,150	7,010	1,570
Legal	-	310	1,130	870	1,310	3,540
STEM :						
Computers & mathematical sciences	140	1,220	2,260	860	4,150	550
Architecture	-	910	140	160	370	40
Engineering	-	640	640	1,450	3,620	1,260
Life & physical sciences	160	990	940	30	1,410	1,390
Social Sciences	-	-	230	-	710	2,230
Community Services and Arts:						
Community & social services	160	1,880	2,010	1,060	6,470	3,900
Arts, design, entertainment, sports & media	140	2,330	3,130	430	6,380	2,990
Education, Training & Library	100	3,780	5,120	1,490	15,380	18,140
Healthcare Professional & Technical	60	4,330	9,690	15,790	11,340	9,960
Healthcare Support	3,170	11,760	7,620	2,670	1,540	480
Food and Personal Services:						
Food preparation & serving related	11,820	30,280	12,980	3,430	2,750	1,080
Building and grounds cleaning & maintenance	7,060	14,680	5,280	910	900	-
Personal care & services	2,940	15,170	10,600	2,470	2,290	360
Protective services	650	5,090	4,780	1,140	2,800	340
Sales and Office Support:						
Sales & related	7,380	38,680	26,030	6,840	12,180	1,480
Office & administrative support	4,420	42,570	34,340	13,020	13,630	3,230
Blue Collar:						
Farming, fishing & forestry	530	1,670	-	40	-	-
Construction & extraction	7,430	33,230	9,310	1,910	850	-
Installation, maintenance & repair	3,510	20,780	8,260	2,520	1,070	650
Production	4,000	21,050	8,610	2,580	2,910	610
Transportation & material moving	9,460	31,300	9,260	1,600	1,620	440

